	<b>Application Note</b>	
	Product	iCAM501
	Doc Ref.	326264
	Revision	1
<b>Title: Setting time and date on Windows 7 With Virtual PC</b>		

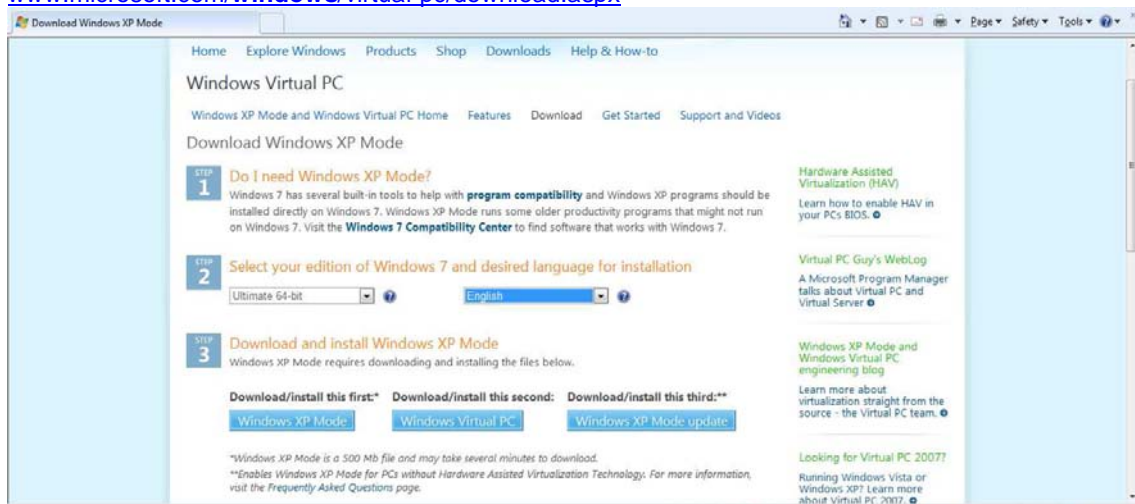
Windows 7 does not allow the date and time to be set on the iCAM501 due to Microsoft changing the driver from that used with Windows XP. A workaround for this problem is to use Windows XP mode.

To use Windows XP mode it needs to be downloaded from the Microsoft website.

Note: This will only work if you are running Windows 7 Professional, enterprise or ultimate

Download windows xp mode from

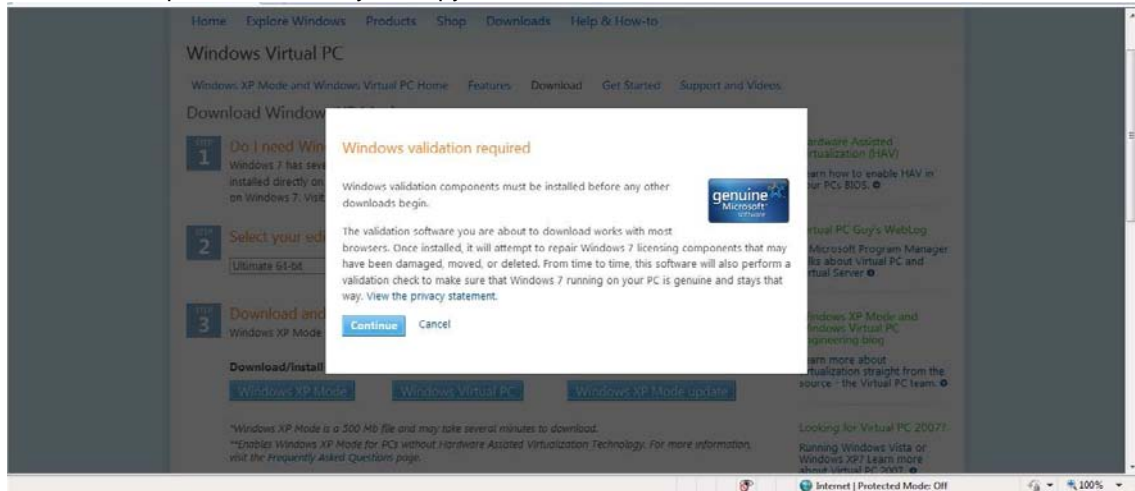
[www.microsoft.com/windows/virtual-pc/download.aspx](http://www.microsoft.com/windows/virtual-pc/download.aspx)



Select version of windows 7 to use, you must have Windows 7 Professional, Enterprise, or Ultimate 32 or 64 bit versions.

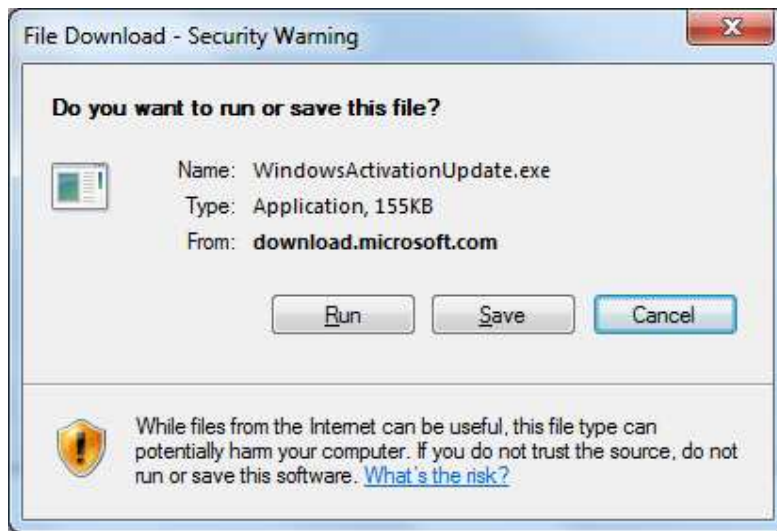
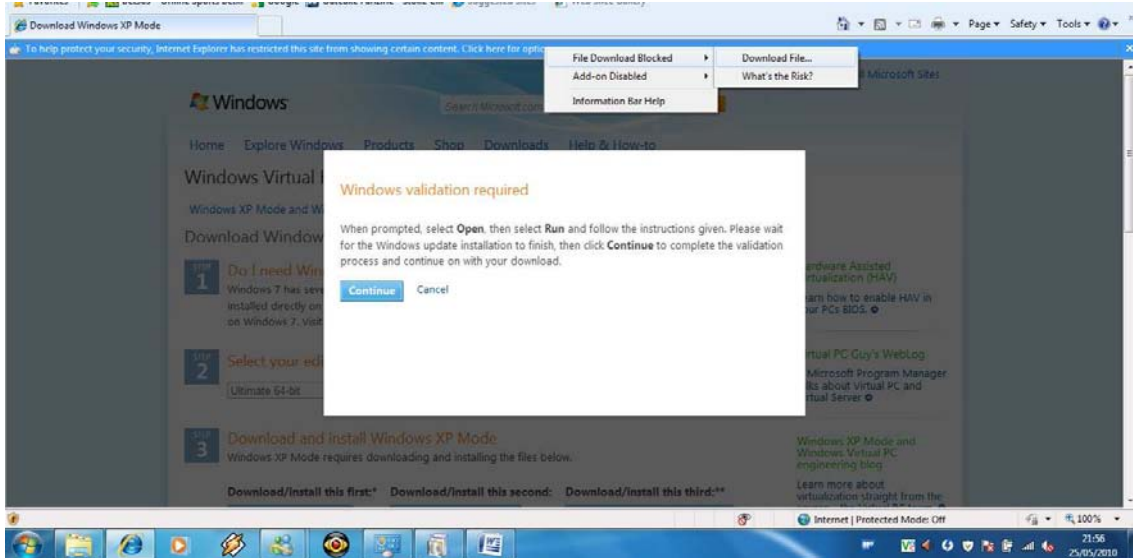
Download the 3 required files in order from left to right (Windows XP mode, Windows Virtual PC, Windows XP Mode update)

You will be required to validate your copy of Windows 7



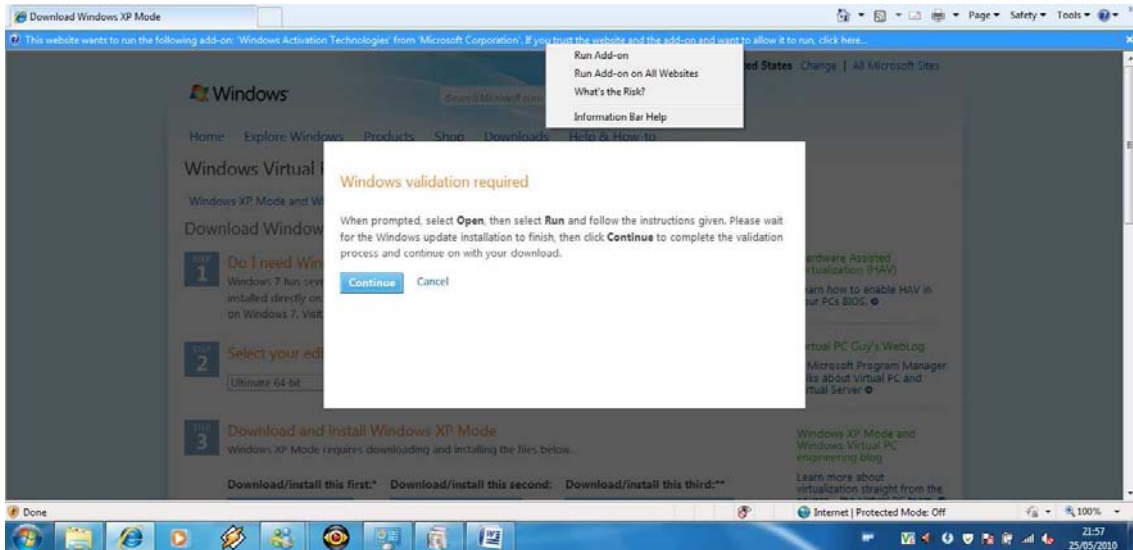
If asked download and run the windows activation update executable

# 326264\_01 iCAM501 setting the time with Windows 7 and Virtual PC

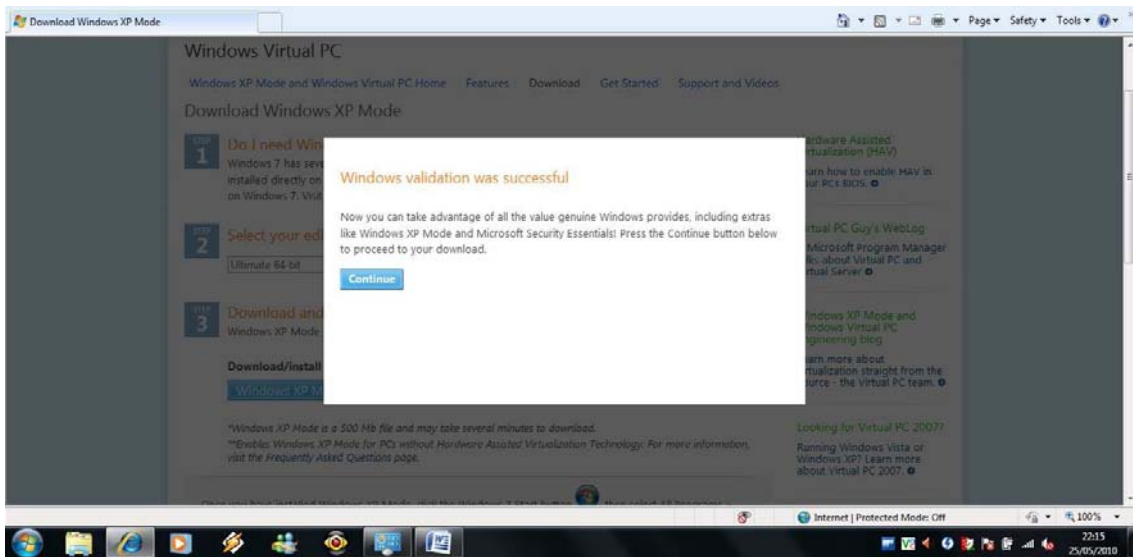


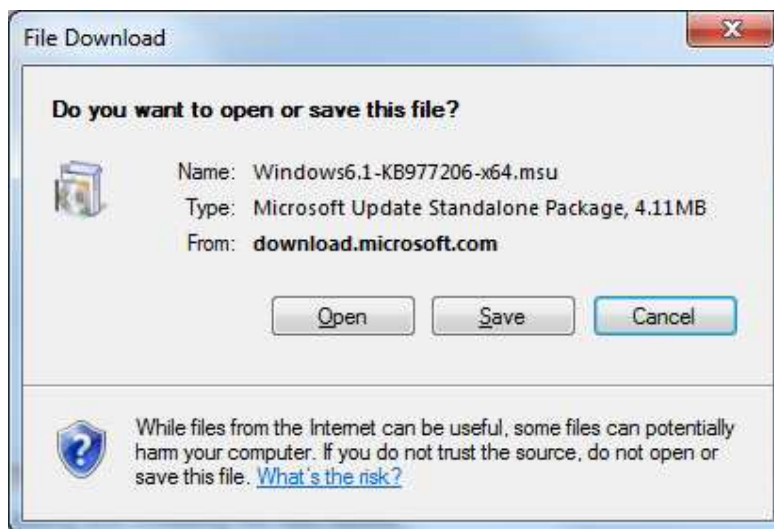
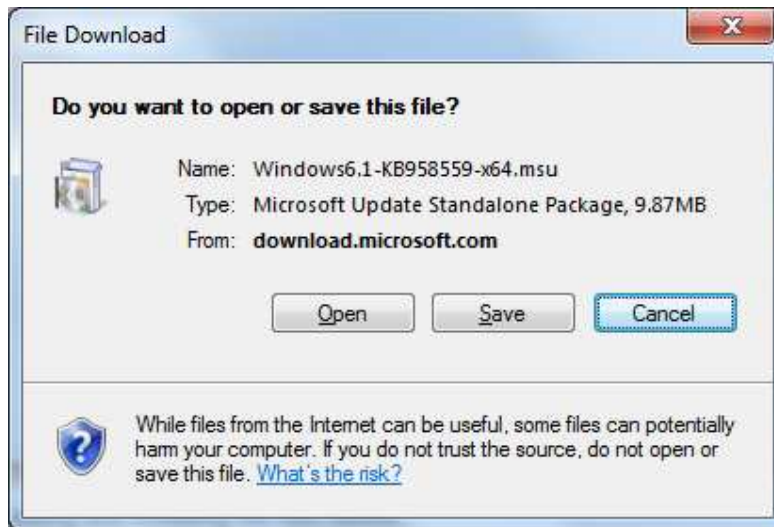
Once installed you may have to run the add-on

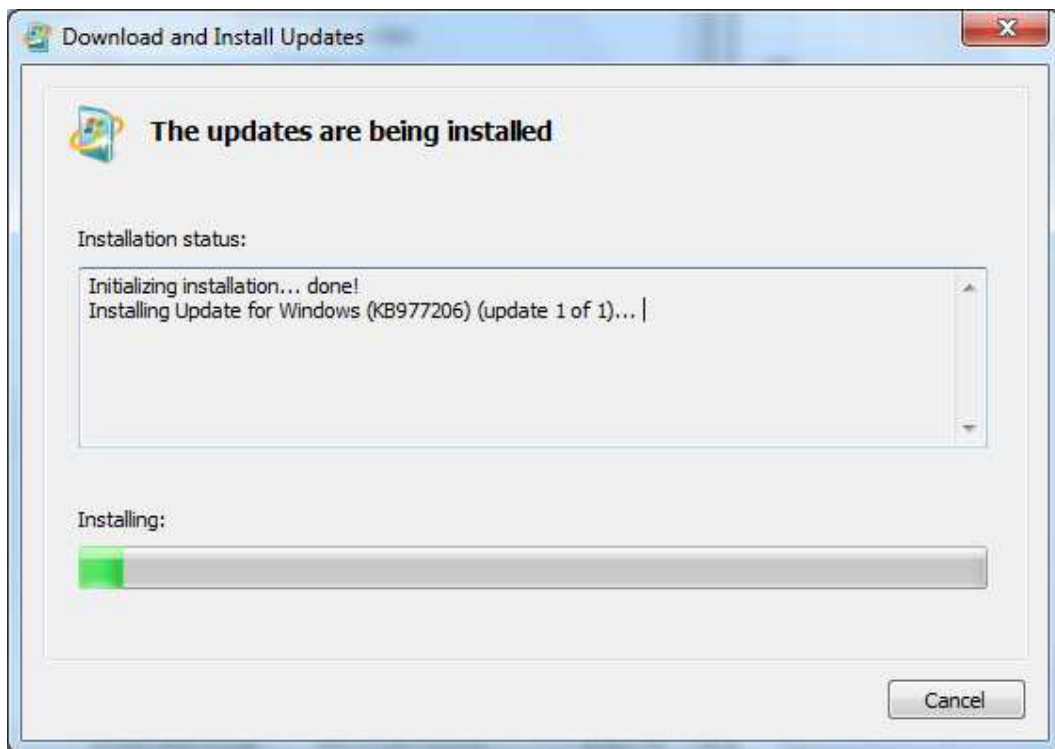
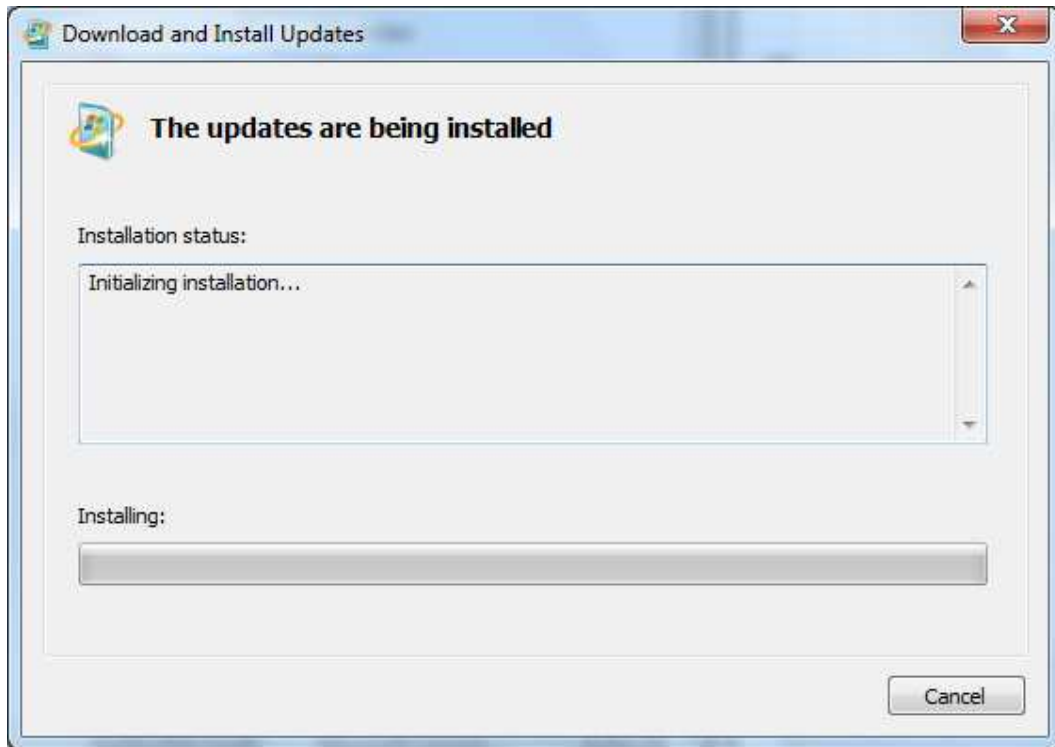
# 326264\_01 iCAM501 setting the time with Windows 7 and Virtual PC

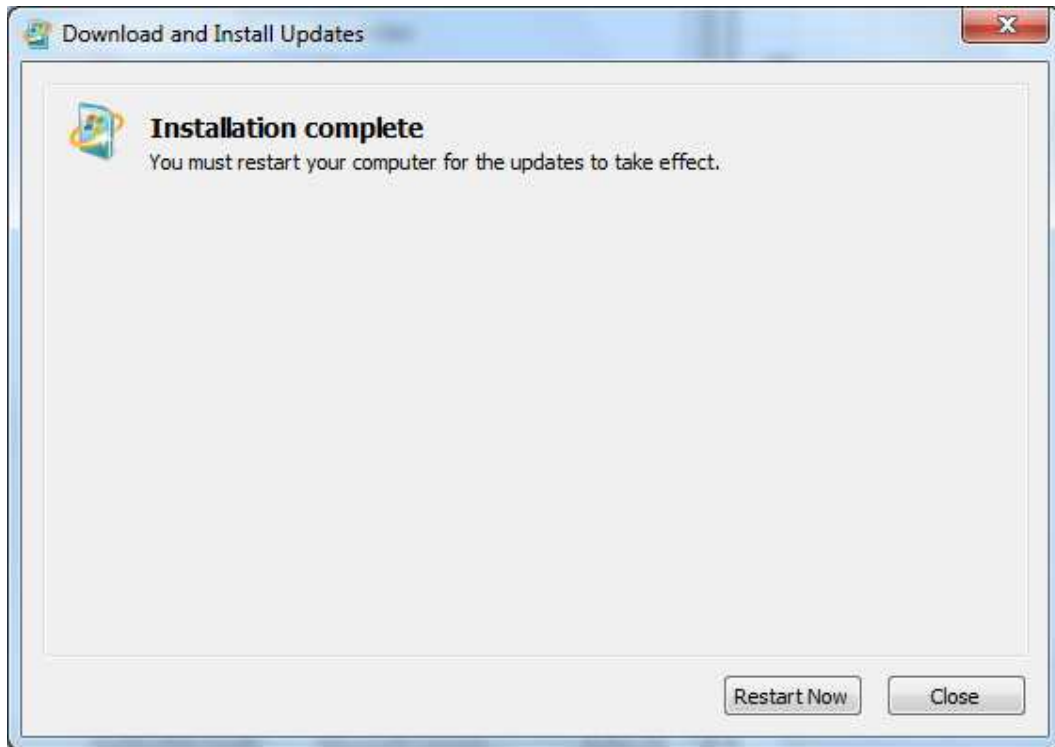


Once validated click continue and download and install the 3 files





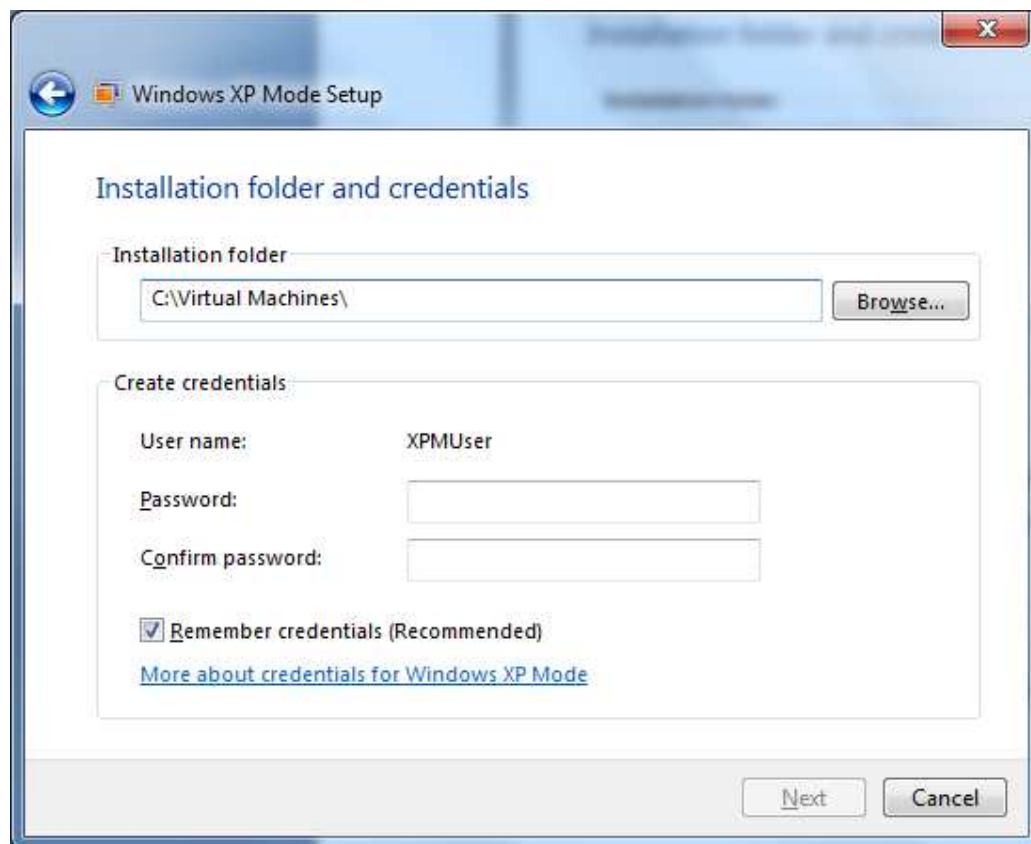




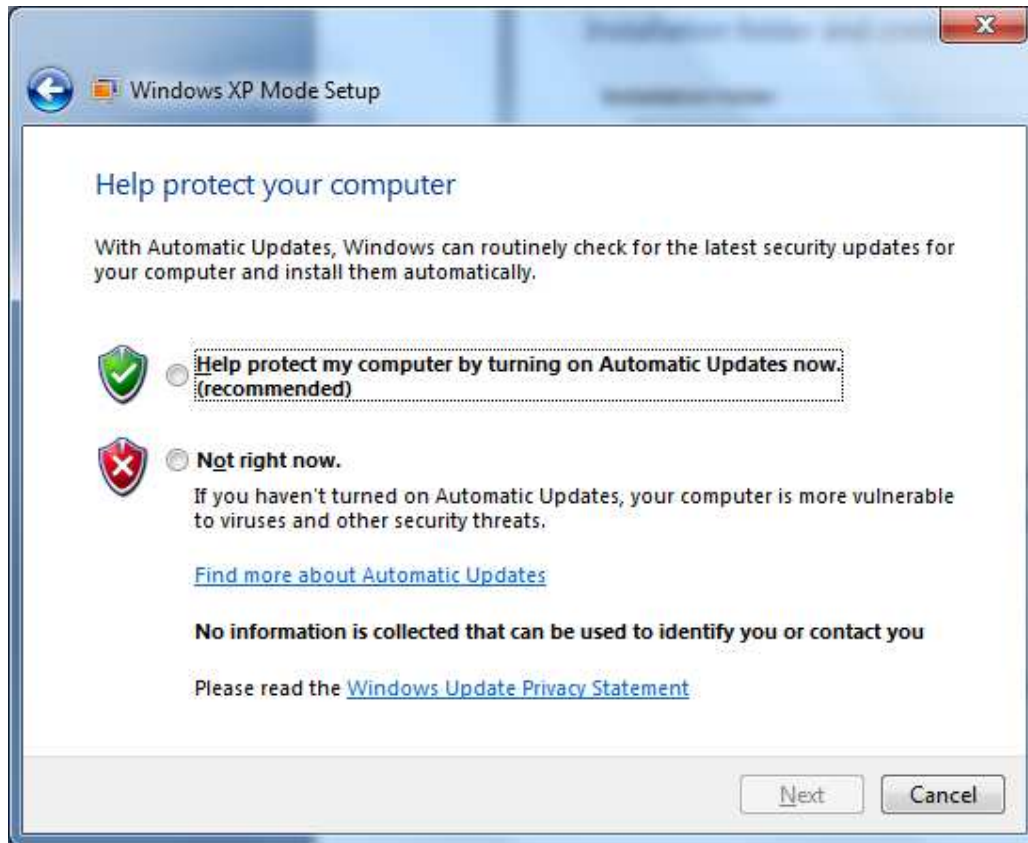
To start Windows XP go to

Start->program->Microsoft virtual PC->Windows XP Mode

Fill in the information requested



Follow the on screen instructions





Wait while windows XP boots



## 326264\_01 iCAM501 setting the time with Windows 7 and Virtual PC

Once boot click USB-> PTP-USB device, a driver will be installed to Windows 7 and then the iCAM501 will show up in Windows XP just as it would if it was the host operating system.

Follow the setting time and data section for Windows XP to set the time. Windows XP mode can then be closed. The iCAM501 will need to be released to continue to use it with Windows 7. This can be done in the same way that mounting the device was performed

