

Industrial Wireless Ethernet

Plug & Work with ELPRO 805U-E

Ethernet connectivity without the wiring

The 805U-E is an ideal solution for Ethernet connections in process control and automation applications - PLC's, DCS, SCADA, data acquisition, wireless video ... the 805U-E can handle multiple applications simultaneously.

All in the same unit ...

Maximum flexibility, while saving expensive wiring costs. Each module can be configured as a

- Access Point
- Client/Station
- Bridge
- Router

- 10/100 BaseT Ethernet, wireless data up to 77 Kbits/sec
- ELPRO's proven Industrial Strength 869MHz 500mW radio technology

Long and short range applications ...

- range 5km, license-free - repeater functionality increases wireless range even further
- excellent penetration in congested industrial environments - over 500 metres through buildings, factory walls and steelwork.

Security, reliability, redundancy ...

- multiple layers of error-detection and correction
- automatic changeover to another Access Point if the wireless link fails
- military-grade AES security encryption of wireless data

Firewall protection and efficient wireless management ...

- secure Firewall protection
- message filtering at MAC address level

Serial interfaces ...

- two serial interfaces, RS232 and RS485
- discrete channel for status I/O, for failure status or external status transfer.

Easy to use configuration and powerful diagnostics ...

- configuration and diagnostics via web-browser
- remote configuration and diagnostics via the wireless link.



805U-E Wireless Ethernet

SPECIFICATIONS

Ethernet

10/100 BaseT RJ45
IEEE 802.3 compliant.
Bridge/router functions work with all Ethernet protocols
Embedded Protocols:
TCP/IP, UDP ARP, PPP, ICMP, HTTP, FTP, TFTP, TELNET

Serial

RS232 V.24 DCE 1.2 to 115.2 Kb/s
RS485 1.2 to 115.2 Kb/s

Discrete I/O

One I/O channel
Input voltage-free contact / Output FET 30VDC 500mA

Networking

Configurable as Access Point or Client, Bridge or Router
Point-to-point, Point-to-multipoint, user configurable addressing
Repeater functionality MAC Filtering - whitelist or blacklist
Serial gateway TELNET

Radio

Frequency hopping spread spectrum
Frequency bands
869.4 MHz 500 mW
869.7 MHz 5mW
Receiver sensitivity -108 dBm @ 10-6 BER
Data rates 7.2, 14.4, 38.4, 76.8 Kb/s or auto rate selection
Protocol CSMA/CA with 32 bit CRC and auto-correction
Radio range 5 km line-of-sight
Range may be extended using repeater features
SMA coaxial antenna connection

Security

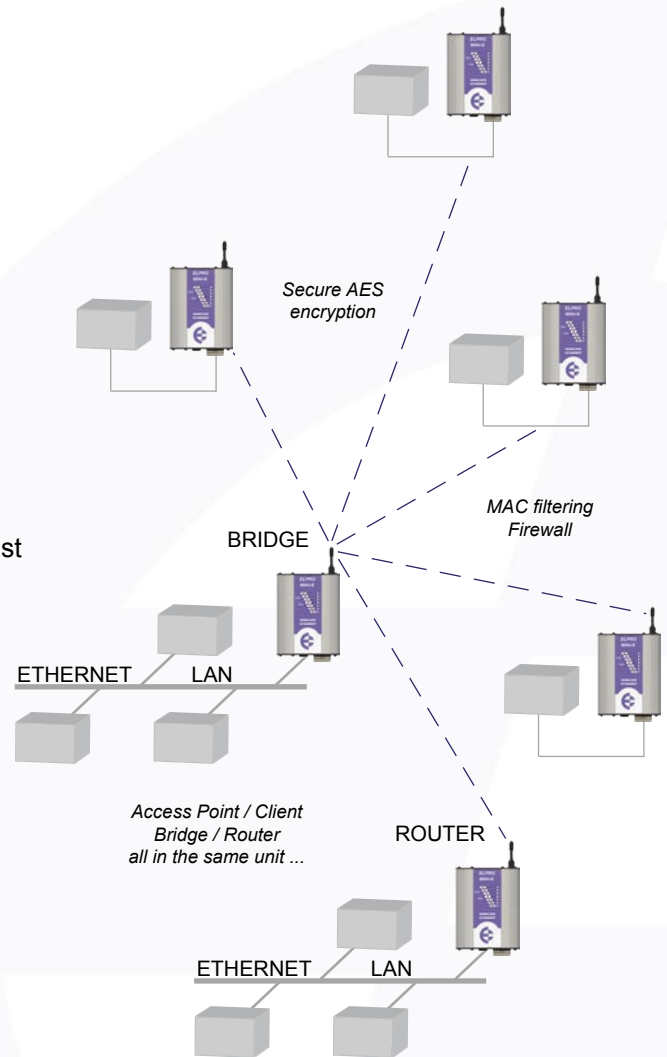
128 bit AES encryption or 64 bit proprietary encryption (configurable)
Data modulation keying MAC Address filtering
Password protected configuration

On-line Configuration and Diagnostics

HTTP with remote configuration via wireless link
RF signal strength, Bit Error Rate, connection monitoring and statistics
PPP Protocol Access to diagnostics

General

Temperature -40 to +60 degC
Humidity 99% non-condensing
Power Supply 10 – 30VDC
Current Normal 280mA (12V), 150mA (24V)
Transmit 500mA (12V), 300mA (24V)
Case, heavy duty painted aluminum, DIN rail mounting
Size 4.5 x 5.5 x 1.2 in. / 114 x 140 x 30 mm
Weight < 0.8 lb / 0.4 kg
Indicators: Power/OK, Radio Rx and Tx, Radio Link, LAN Link/Activity,
Serial Activity, Digital I/O, LAN 10/100Mbit Link
Approvals EN 300 220, EN 300 683



Australia Ph: +61 7 3352 4533
Europe Ph: +44 12 9572 4270
USA/Canada Ph: (866) 713 4409
China Ph: +86 21 5058 7007
Brazil Ph: +55 31 3849 3100

Email: sales@elprotech.com
URL: www.elprotech.com