

RF Power Splitter/Combiner



Splitter/Combiner for use with Extronics iWAP range of wireless infrastructure products

Certified as Simple Apparatus

T4 $-55^{\circ}\text{C} < T_{amb} < 100^{\circ}\text{C}$ (Maximum 1W)

Rugged shielded case rated to IP54

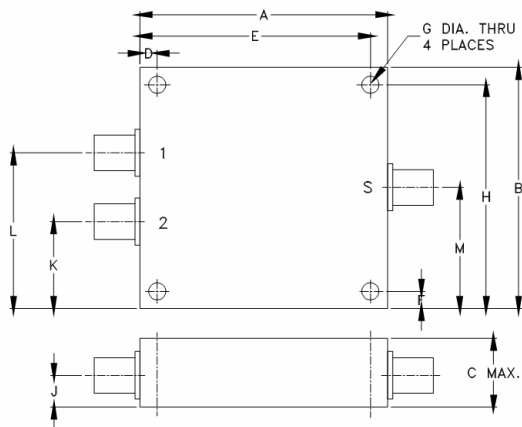
Very wideband 1700 to 9000 MHz

Overview

The coaxial power splitter/combiner allows the output from any iWAP wireless product to be split into two separate RF paths allowing the connection of two antennas, it will also allow the combining of two RF signals. This provides a means of using just one AP or MESH router and having two antennas facing in different directions thus allowing a larger area to be covered by one wireless network node.

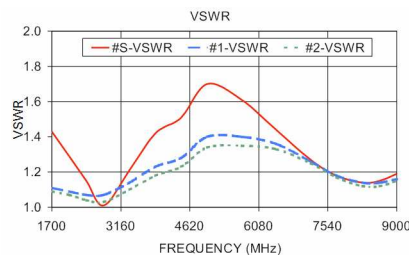
Specification

Frequency Range	1700-9000 MHz
Power Input (as splitter)	Max. 1W
Internal Dissipation	0.125W max.
Isolation	Min. 15dB, Typically 22dB
Insertion Loss (Above 3dB)	Max 1.4 dB, Typically 1.4dB
Phase Unbalance	Max. 4°
Amplitude Unbalance	Max. 0.6dB
Operating Temperature	-55°C to 100°C, T-class = T4
Coaxial Connections	1 sum port, 2 I/O ports on SMA connectors
Relative Humidity	90 to 95%, 40°C, 96 hours; Units may require bake out to restore full performance
Thermal Shock	-65°C to 125°C, 5 cycles
Vibration (High Frequency)	20g peak, 10-2000Hz, 12 times in each of three perpendicular directions (total 36)
Mechanical Shock	100g, 6ms saw tooth, 3 shocks each direction 3 axes (total 18)



Dimensions (mm)

A	B	C	D	E	F
45.72	44.45	16.67	3.18	42.55	3.18
G	H	J	K	L	M
3.18	41.28	7.87	16.00	28.70	22.35



Ordering Information

Description
RF Splitter/Combiner Module

Part Number
A17-0001